

Changing the Architectural Elements and it's Effect on Mosul Architecture

Dr. Abdullah Y. Al-Tayib
Assistant Professor

Hafid Abid Yahya Al-Hiali
Master in Architecture

Department of Architecture
University of Mosul

Abstract

The research problem has been determined through the necessity of the architectural elements and determining their relations to one another with the aim of studying the shifts that have been taken place in Mosul architecture. The research methodology encompasses the application of this frame to buildings that date back to the various stages of architectural change. Consequently, to find out change that have occurred in Mosul architecture elements and the diachronic relations which testify to either continuity or change in it. The research also embraces the method of collecting data on building samples. These include (20) building samples chosen according to objective criteria. Then, a case study on these samples has been applied using a special formula. In Consequence, results relating to the research hypothesis have testified, together with the finding, significant variance between the architectural phases through the changes that have taken place in the architectural elements.

Keyword: Mosul architecture, architectural stages and change.

Ø
Ø Ø Ø Ø Ø (45 ..)

Ø Ø .
Ø 1917 Ø Ø

: .2.3

ØØ) (Ø) Ø () Ø Ø .2

Ø ()
Ø Ø Ø () Ø Ø
Ø ØØ Ø (25 .)

(Ø)
Ø Ø Ø Ø

Ø Ø ()
ØØ .(34 .) -

Ø 1958 Ø Ø 14 Ø
Ø - Ø Ø

International style : .3.3

ØØ Ø Ø Ø !
Ø Ø Ø Ø
Ø ØØ

(Rauf, Ø Ø Ø Ø Ø . Laith, p.22)

Ø Ø Ø ()
Ø

Ø Ø (26 .) Ø

Ø Ø Ø
Ø Ø Ø

(3 Ø)

() : (.)

Ø Ø Ø Ø Ø
Ø

.6

.1.6

()

∅ ∅ .∅ ∅ - -

.2.6

∅ - - .∅ ∅ ()

· () () - ∅ ()

- · () -

· %60 ∅ %20 () -

· %80 ∅ %40 () -

() -

() - · %40 ∅

· %80 ∅ %40 ()

.3.6

∅ ∅ () - ∅ ∅

- ∅ ∅ ∅ · () -

∅ ∅ - ∅ ∅ · ()

∅ ∅ ∅ - ∅ ∅

.1.3.6

∅ ∅ · -

∅ ∅) -

∅ ∅) ∅ · %60 (

∅ ∅ - · %20 ∅ (

(∅ · %60 ∅ %40 ∅ %40 ∅ %20

.2.3.6

∅ ∅ () -

∅ ∅ ∅ ∅ () - ∅

· (∅) · %20 %40

الطيب:

		\emptyset		
.3.3.6	:	()	:	()
()	-	()	-	()
.40%	()	-	()	-
<hr/>				
.4.3.6	:	()	:	()
()	-	()	-	()
<hr/>				
.4.6	-	()	-	()
()	-	()	-	()
.50%	()	-	()	-
.60%	()	-	()	-
.60%	()	-	()	-
.40%	()	-	()	-
()	-	()	-	()
<hr/>				
.7	:			:
.1.7	:			:
()	-	()	-	()
<hr/>				
.1.1.7	-			-
()	-	()	-	()
.19.5%	()	-	()	-
.80.5%	()	-	()	-
.44%	()	-	()	-
.56%	()	-	()	-
.75%	()	-	()	-
.60%	()	-	()	-
.40%	()	-	()	-
<hr/>				
.2.1.7	-			-
()	-	()	-	()
.45%	()	-	()	-
.55%	()	-	()	-
.69%	()	-	()	-
.77%	()	-	()	-
.86%	()	-	()	-
.31%	()	-	()	-
.23%	()	-	()	-
.14%	()	-	()	-

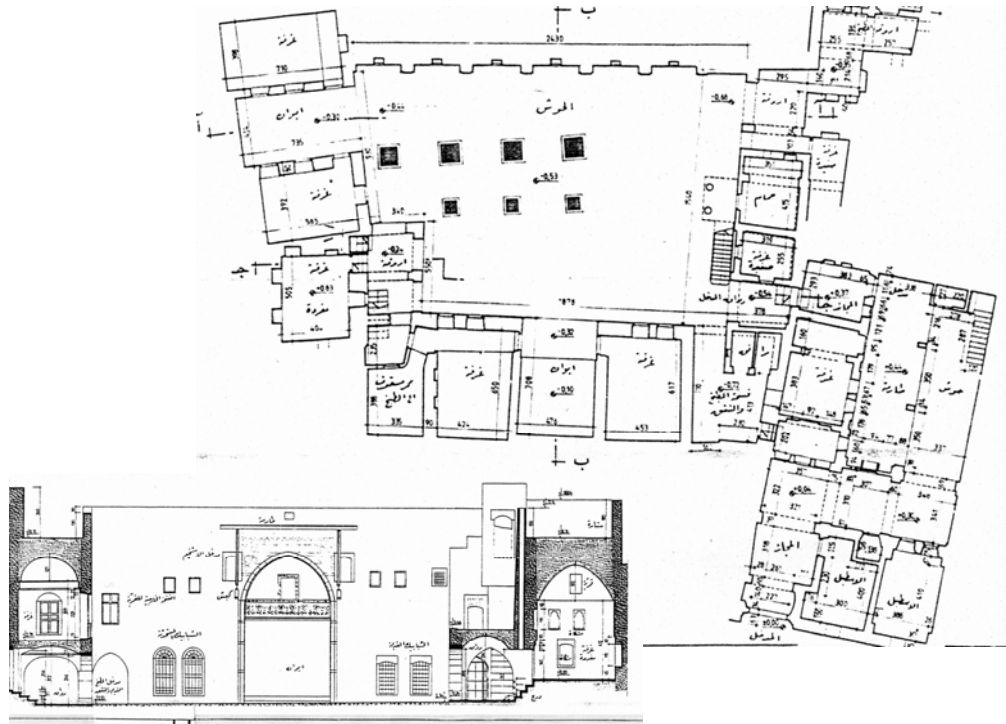
Ø	
Ø	.1.1.8
Ø	()
Ø	Ø
Ø	.2.1.8
Ø	Ø
Ø	.3.1.8
Ø	Ø
Ø	.4.1.8
Ø	Ø
Ø	.2.8
Ø	: Ø
Ø	.1.2.8
Ø	()
Ø	Ø
Ø	Ø
Ø	.2.2.8
Ø	()
Ø	.3.2.8
Ø	(
Ø	.4.2.8
Ø	Ø
Ø	(
Ø	.3.8

1907

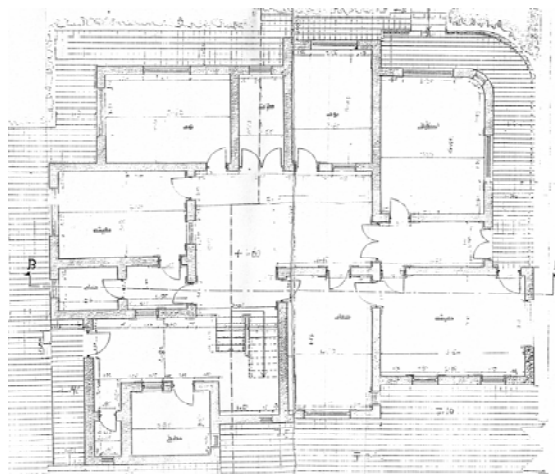
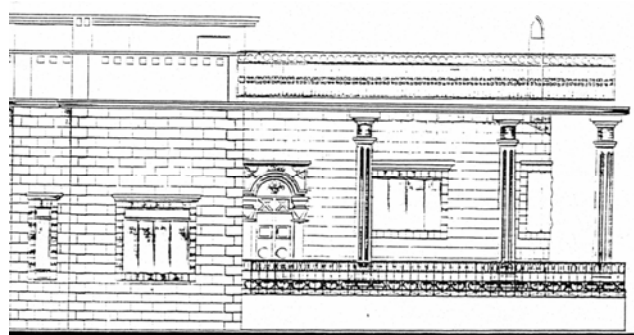
Ø

.9

Ø	Ø	-	-	.1.9
Ø	Ø	.	()	



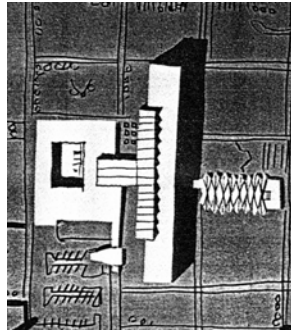
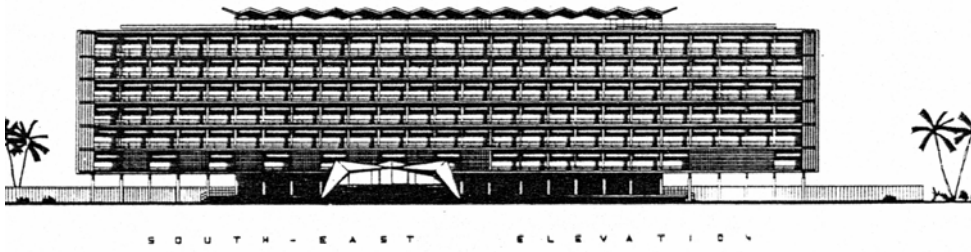
/ Ø (1)



/ Ø (2)

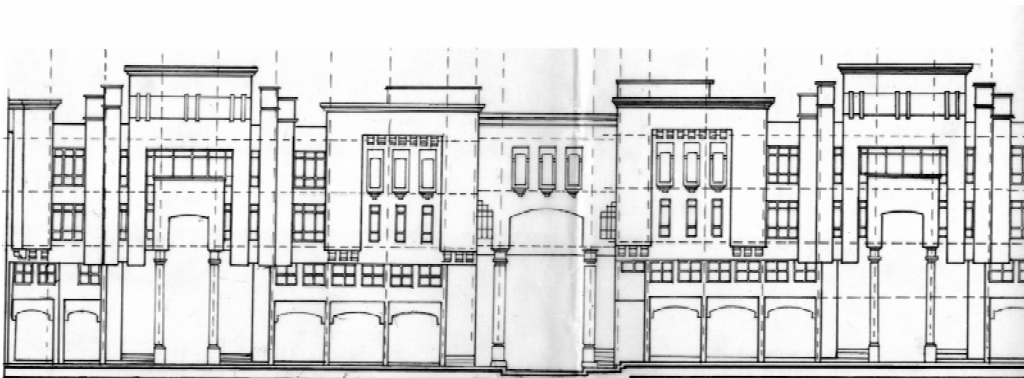
Ø

الطيب:



/ Ø

: (3) Ø



/

: (4) Ø