

Automated Segmentation of Retinal Blood Vessels using Fast Marching Method and local mathematical analysis

Hebatollah Alkhattour

heba.kha@gmail.com

Department of Electronic and Telecommunication Engineering, Albaath University

Received: 30-5-2019

Accepted: 9-12-2019

ABSTRACT

In this work, Fast Marching Method (FMM) has been suggested for Retinal blood vessels segmentation. FMM is an optimization technique; and the main advantage of the FMM is its ability to deal with branches and bifurcations without any additional computational cost. This advantage had been used in robotics to find the optimal path for the robot to move from the starting point to the goal with no collisions. Considering the tree structure of blood vessel, I will use FMM to find the shortest path between the optic disk and the blood vessels ends to draw the tree of the blood vessels. This method has been implemented using the M language in MATLAB R2016b. In this work local mathematical analysis has been implemented so that we can have an initial estimation of blood vessels distribution in an image in order to minimize the huge amount of noise included in retinal images and to make FMM implementing easier. FMM performance had been compared to other techniques used for retinal blood vessel detection like "Matched Filters". The results showed that the FMM performance overcame some of those techniques and close to other high resolution methods. The FMM algorithm has been validated using the well-known "DRIVE" database and the resulting resolution ranged between 80% to 93% (depending on the noise amount in image) with iteration number between 500 to 1000 (according to the optic disk position in the image) with an average time of 0.57 seconds for each iteration which mean that the total running time is 5-10 minutes. FMM had also been validated using STARE data set and achieved a TPR of 90% for 700x605 STARE images in 15 minutes, and a TPR of 86% in 2.6 minutes when reducing image size to 350x303.

Keywords:

Fast marching method (FMM), Retinal blood vessel detection, auto segmentation.

<https://rengj.mosuljournals.com>

Email: alrafidain_engjournal1@umosul.edu.iq

1. INTRODUCTION

The retina is a light-sensitive tissue that forms the inner layer of the eye. it contains neural tissues and blood vessels and considered as the only tissue of human body we can use to see blood vessel non-invasively which have great importance in diagnosis and treating many diseases such as diabetes, hypertension, cardiovascular diseases and cancers. segmenting retinal blood vessels is a challenging problem because of the variety of illumination conditions, low contrast, small vessel detection, and the trade between accuracy and computational efficiency. Retina can be visualized as an image using the fundus camera. Those images are often noisy, poorly contrasted and non-uniformly illuminated

in addition they suffer from brightness variations along the same image and likewise between different images.

In order to segment retinal blood vessel tree, many methods had been reported including supervised methods [1] and unsupervised methods [2]. Many applications had been presented in the diagnosis of various eye and systemic diseases, such as diabetes, hypertension, and angiogenesis.

Typical blood vessel detection methods apply an initial estimation of the vessel network, after that, tuning methods are used in order to improve the accuracy of the vessel detection [3]. Finally, post processing methods are applied to remove false detected vessels.

In [3] a new multi-scale line-tracking procedure have been proposed. it starts from a small group of pixels, derived from a brightness selection rule, and terminates when a cross-sectional profile condition becomes invalid. The multi-scale image map is derived after combining the individual image maps along scales. This map contains pixels that certainly belong to a vessel. The initial vessel network is derived after map quantization of the multi-scale confidence matrix. After that median filtering is applied in the initial vessel network, and this restores disconnected vessel lines and eliminates noisy lines. At the end, erroneous areas are removed (during post-processing) using directional attributes of vessels and morphological reconstruction. Author in [3] declared "The experimental evaluation in the publicly available DRIVE database shows accurate extraction of vessels network. The average accuracy of 0.929 with 0.747 sensitivity and 0.955 specificity is very close to the manual segmentation rates obtained by the second observer".

In [4] a spatially adaptive contrast enhancement technique was integrated with Tyler Coye algorithm, which has been improved with Hough line transformation based vessel reconstruction method. The proposed approach was evaluated on STARE and DRIVE data sets and compared with five widely used contrast enhancement techniques based on wavelet transform, contrast limited histogram equalization, local normalization, linear unsharp masking and contourlet transform. The results revealed that the enhancement technique is well suited for the application and also outperforms all compared techniques.

In [5], a set of automated methods were proposed in order to analyze the retinal vessel network and to quantify its morphologic properties taking into consideration both arteries and veins, in two-dimensional color fundus images. The analytical methods included Formation of a well-connected vessel network, Structural mapping, Artery-venous classification and Blood vessel hemorrhage detection. On the other hand, quantification methods included vessel morphology analysis based on the measurement of tortuosity, width, branching angle, branching coefficient, and fractal dimension. Morphological parameters were measured with respect to arteries and veins separately in a vessel network. Then methods have been validated with the manually annotated retinal fundus images as a ground truth. The accuracy of the method was quantified using two metrics

1- misclassification rate: this metric gave a classification error rate of (17.07%) for single vessel trees (without AV crossing) and 4.96% for paired vessel trees (with AV crossing).

2- the histogram of pixel misclassification per image: The average misclassification rate was 8.56% which means that the accuracy of correct classification is 91.44%.

[5] declared that "The average running time per image starting at the readily available vessel segmentation to AV classification was 8 minutes including 7 minutes for structural mapping and 1 minute for subsequent AV classification, when processed in MatLab environment on a standard personal computer with Intel core 2 Duo processor, running at 3 GHz".

In [6] A supervised method was presented to tackle the problem of retinal blood vessel segmentation, This method combines two superior classifiers: Convolutional Neural Network (CNN) and Random Forest (RF). Here, CNN performs as a trainable hierarchical feature extractor and ensemble RFs work as a trainable classifier. By integrating the merits of feature learning and traditional classifier, the method can automatically learn features from the raw images and predict the patterns. experiments have been conducted on DRIVE and STARE databases, and showed that this method overcomes other major studies on the same database.

In [7], an automatic unsupervised blood vessel segmentation method for retinal images was proposed. This method constructed a multidimensional feature vector using the green channel intensity and the vessel enhanced intensity feature by the morphological operation. then, it exploited a self-organizing map (SOM) for pixel clustering, which is an unsupervised neural network. Finally, it classified each neuron in the output layer of SOM as retinal neuron or non-vessel neuron with Otsu's method, and got the final segmentation result.

In [8], we propose a new infinite active contour model was proposed, it uses hybrid region information of the image to segment vessels. An infinite perimeter regularizer, provided by using L2 Lebesgue measure of the γ -neighborhood of boundaries, allows for better detection of small oscillatory (branching) structures than the traditional models based on the length of a feature's boundaries (i.e., H1 Hausdorff measure). The local phase based enhancement map is used for its superiority in preserving vessel edges while the given image intensity information will guarantee a correct feature's segmentation. This model was applied to three public retinal image datasets (two datasets of color fundus

photography and one fluorescein angiography dataset) and it outperforms its competitors when compared with other widely used unsupervised and supervised methods. It achieved an accuracy of (0.954) on the DRIVE dataset .

2. THE THEORETICAL BACKGROUND

Fast marching method is an optimization process uses iterative exploration and exploitation procedures in order to find the minimum path between the starting points and the goal [9]. Assuming a closed curve (Γ) in the plane propagating normal to its self with speed (F). when ($F>0$) then the front will always move “outwards”. The position of this front can be shown by computing the arrival time $T(x,y)$ of this front when it crosses each point (x,y) as shown in figure (1) [10].

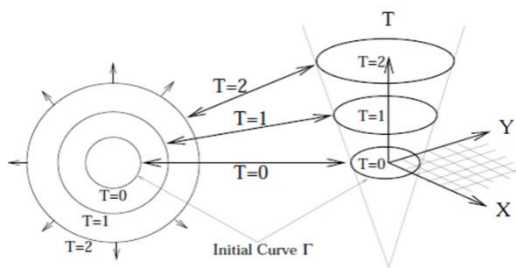


Fig.1: Transformation of front motion into boundary value problem [10].

The equation of the arrival time $T(x,y)$ can be easily derived using “distance = rate * time” (figure 2) where:

$$dx = F (dT) \quad \dots (1)$$

Hence:

$$1 = F \frac{dT}{dx} \quad \dots (2)$$

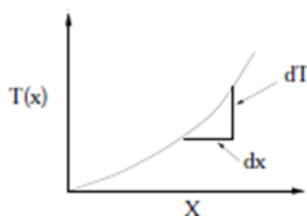


Fig.2: Setup of Boundary Value formulation [11].

In multi dimensions, the special derivative of the solution surface T becomes the gradient, which means:

$$|\nabla T|F = 1 \quad T = 0 \text{ on } \Gamma \quad \dots (3)$$

As a result, we can describe the front motion as the solution to a boundary value problem. And if the speed (F) depends only on position, then the equation can be reduced to the familiar Eikonal equation.

The Eikonal equation can be written as [11]:

$$\begin{aligned} |\nabla u| &= f && \text{in } \Omega \\ u &= 0 && \text{on } \Gamma \in \partial\Omega \end{aligned} \quad \dots (4)$$

Finding the solution of this equation is a difficult task and it, in most cases, finding a global smooth solution of this equation is impossible. Thus, many methods have been explored in order to find the optimal solution of this equation. Among those methods we can find the fast marching method (FMM). FMM uses First order numerical approximation to solve the Eikonal equation based on the following operators (assuming that a function u is given with the value $u_{i,j} = u(x_{i,j})$ on a Cartesian grid with grid spacing (h)) [9].

- Forward operator (direction x):

$$D_{i,j}^{+x} u = \frac{u_{i+1,j} - u_{i,j}}{h} \quad \dots (5)$$

- Backward operator (direction x):

$$D_{i,j}^{-x} u = \frac{u_{i,j} - u_{i-1,j}}{h} \quad \dots (6)$$

With similar Forward and backward operators in direction (y) (figure 3):

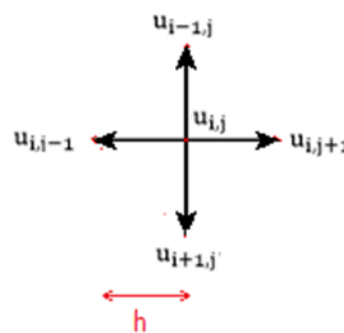


Fig.3: Forward and backward operators.

According to Godunov [12], The following upwind scheme is used to estimate the gradient ∇u in 2D:

$$\|\nabla u_{i,j}\|^2 = \frac{\max\{D_{i,j}^{-x}u, D_{i,j}^{+x}u, 0\}^2 + \max\{D_{i,j}^{-y}u, D_{i,j}^{+y}u, 0\}^2}{T_{i,j}^2} \quad \dots(7)$$

Where:

$$T_{i,j} = T(X_{i,j})$$

$T_{i,j}$: is the cost function and it gives the (maximum) cost of moving from one point to its neighboring point.

FMM solves this equation using the following algorithm [9]:

▪ **At the initial stage:**

The starting and the goal points are defined and divided into 3 groups:

- **Accepted points:** this group consists of the starting points (in the initial stage). And for later stages it will contain every point that we had computed its distance function (u) and considered it as fixed.
- **Considered points:** this group contains every point next to the points defined as “accepted”. At these points the estimation (v) of the distance function (u) is calculated (this value won’t be fixed).
- **Far points:** includes the rest of points in the image. The estimated distance values (v) of these points are not yet computed.

In addition, the distance function (u) would be defined as follows:

$$\begin{aligned} u(\text{Accepted}) &= 0; \\ u(\text{considered}) &= T(\text{considered}); \\ u(\text{Far}) &= \text{inf}; \end{aligned}$$

Where (T) is the cost function from one point to the neighboring points.

▪ **The iterative stage:** this is done as follows

- As long as the goal points don’t belong to the accepted group, we keep looking for the considered points that have minimum estimation value of the distance function.
- Points of minimum estimation values are called “trial”, and once we get them we assign them as “accepted” and their distance function would be equals to their estimation values. i.e.

$$u(\text{trial}) = v(\text{trial})$$

- After that we update all the points next to the “Trial” ones so that they become “Considered” and have an estimated distance value of:

$$v(x_k) = \min_{y_k \in \text{NeighAccepted}(x_k)} \{u(y_k) + T(y_k)\} \quad \dots(8)$$

- The “Considered” points are then rearranged according to their priority.

(Figure 4 demonstrates the described FMM.)

Updating procedure [9]:

Updating procedure (demonstrated at figure 5) can be described as the following loop:

- For every point (x_k) in the “not accepted” neighboring of the trial points
 - If (x_k) is “far”, then move it to “Considered”.
 - if there is only one Accepted or one pair A of opposite Accepted configurations, then the estimation of the distance function at this point (x_k) is given by:

$$\begin{aligned} v_k &= u_A + T_k \\ \dots(9) \end{aligned}$$

- if there are at least two non-opposite Accepted configurations in the neighborhood of (x_k) then the estimation of the distance function at this point (x_k) is given by:

$$\begin{aligned} &\text{if } T_k > |u_A - u_B| \\ v_k &= \frac{1}{2}(u_A + u_B + \sqrt{2T_k^2 - (u_A - u_B)^2}) \quad \dots(10) \\ &\text{else} \\ &v_k = u_A + T_k \end{aligned}$$

- Sort Considered according to the priority assignment.

Notice: T is calculated according to equation(4).

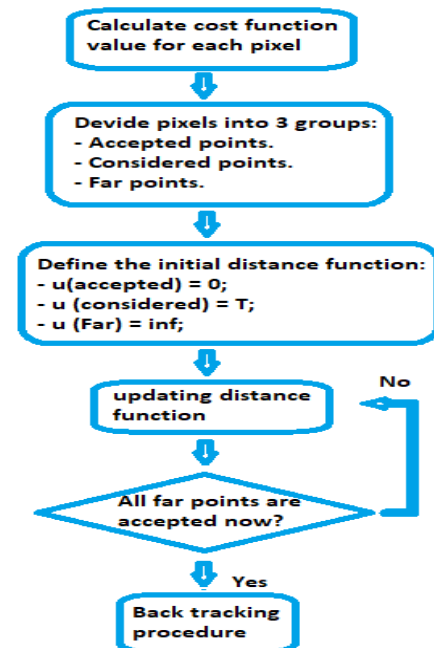


Fig.4: FMM block diagram.

Back tracking stage:

In this stage the starting points (x_{start}) and the goal points (x_{goal}) are defined in addition to the forward path that we had in the exploration procedure. The goal points are assigned to be part of the back tracking path and then an iteration loop starts. During this loop the neighboring points of the goal points are investigated and the points with the least distance function value are chosen to become part of the back tracking path.

3. THE PROPOSED ALGORITHM

The goal of the FMM is finding the shortest path between two points without crossing constraints existing in between.

The main advantage of the FMM is its ability to deal with branches and bifurcations without any additional computational cost. This advantage had been used in robotics to find the optimal path for the robot to move from the starting point to the goal with no collisions. Applying FMM on mazes is a good way to show the efficiency of this algorithm and its ability to achieve the goal it was designed for since it can be tested on a complex set of obstacles positioned between the starting and the goal points.

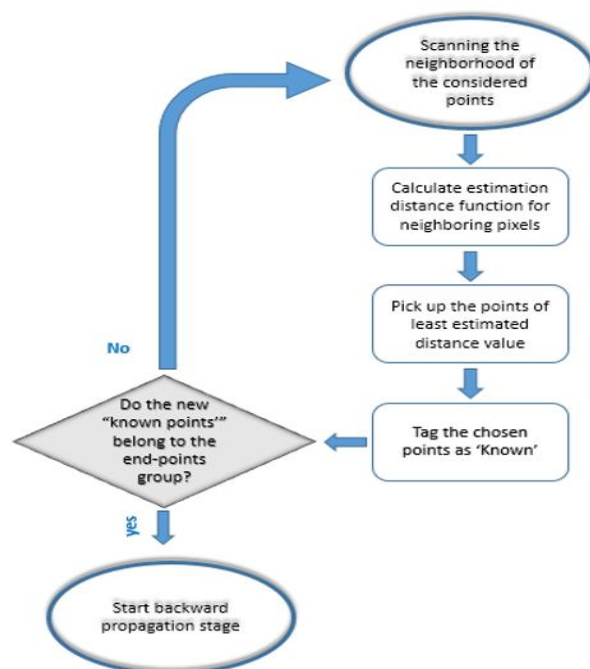


Fig.5: updating procedure flowchart.

After that, the FMM became widely used in image processing especially for medical images. And it is obvious that FMM would be completely efficient for tracking blood vessels in an image because of its ability to deal with bifurcations and thus it would be perfect for retinal blood vessel tree segmentation.

This algorithm was applied completely using the M language of MATLAB to extract the lines of blood vessels. We can say that FMM consists of the following main stages:

Initial stage: Illumination properties of retinal images are used to detect the optic disk (OD) position automatically. After that, the pixels of the OD are scanned to get the least intensity pixels, those pixels become the starting points of the FMM. After that local analysis of the retinal pixels is implemented in order to select the local least intensity pixels of the image. Those pixels become the expected goal points of the forward propagation stage. FMM is then implemented so that it matches start points to the maximum available number of the goal points resulting in an approximated map of the retinal blood vessels. Then back tracking procedure starts from the goal points towards start points drawing a single-pixel route from each end point to the start point. This route can be defined as the blood vessel tree of the retinal image.

The algorithm was applied on images taken from the familiar DRIVE and STARE data sets. Forward propagation and back tracking stages for a single DRIVE image with limited number of end points are shown in figure (6).

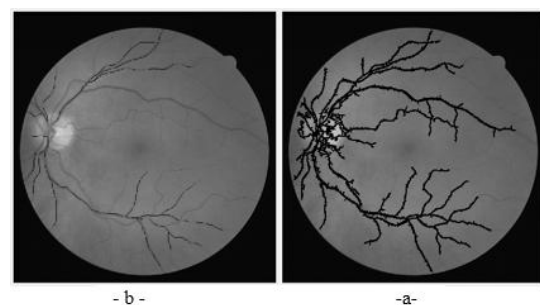


Fig.6: FMM (a) exploration stage (b) exploitation stage.

Pre-processing stage: here we try to have an initial approximation of the retinal blood vessel position. The importance of this stage comes from the huge amount of noise in fundus images and the convergence of the intensity values among adjacent pixel at the first place, and from the high sensitivity of the FMM against contrast values of the adjacent pixels. FMM efficiency increases obviously as contrast increase. On the other hand, FMM becomes blind when contrast decrease and tends to cross existing constrains which affects vessel tracing badly. To overcome these problems, the pre-processing stage included a median filtering procedure, followed by local numerical analysis of the retinal pixels in order to estimate most probable position of the blood vessel. This step is of great importance to magnify the FMM efficiency since it creates a kind of clear borders that can be considered during exploration process. This step can also reduce the number of iterations and time consumption required for exploration process. This initial estimation of the position of blood vessel is shown in figure (7).



Fig.7: initial estimation of retinal blood vessel position in a fundus image.

Applying FMM on pre-processed fundus images:

In this stage, image enhancement is first performed to increase contrast between

vessel pixels and non-vessel pixels, this enhances FMM performance since it enlarges variations between vessels pixels and background pixels. This stage consists of two main phases:

In exploration phase, a forward propagation is implemented from starting points to the goal points. This phase gives every single point that have the probability of being among the vessel pixels.

In exploitation phase, the goal points of the exploration phase are considered as the starting points of exploitation phase, then a back tracking search is implemented in order to find pixel with least distance function values that gives its distance from starting points which are the goal points of the exploitation phase. At this phase, we don't take all the pixels that may belong to vessel. Only a single pixel width tracking line is taken into consideration. This line connects the start and goal pixels and provide us the desired tree of the retinal vessels. Figure (8) shows FMM main phases.

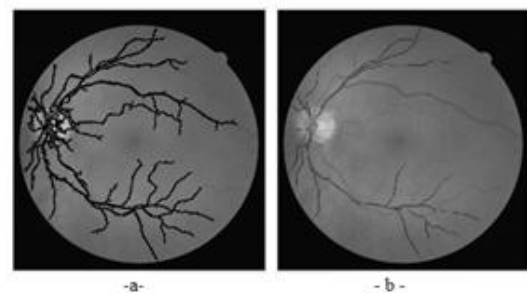


Fig8: FMM phases (a) exploration phase, (b) exploitation phase.

Basic steps in the proposed algorithm are demonstrated in figure 9.

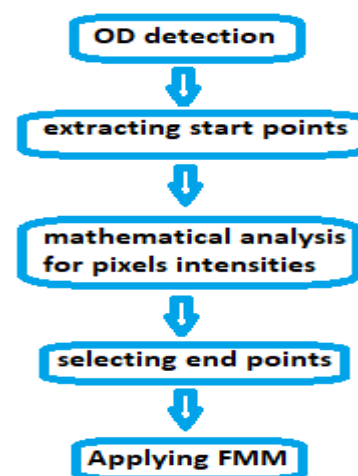


Fig9: The proposed algorithm diagram.

4. RESULTS AND DISCUSSIONS

FMM has been validated on many different images taken from the familiar DRIVE data set. It achieved a TPR of 80% to 93% and in some cases it achieved a TPR of 95%, with an iteration number ranges between 100 to 500 according to the OD position (OD distance from retina’s center). The average time of each iteration is about 0.57 sec this results in a running time of 5-10 minutes.

FMM hasalso been validated using STARE data set that contain PPM image with 700x605 pixels. For STARE data set, performance had been tested for images with different sizes using different performance measure like iteration number, time and TPR. Table 1, shows the FMM performance according to the mentioned measures where TPR-ah and TPR-vk are the TPR for two human supervisors in STARE data set while TPR-net is the TPR compared to the matched filter implemented in STARE data set.

Table 1: FMM performance in STARE data set.

| Image size | iteration number | Single iteration time | Total time | TPR-ah | TPR-vk | TPR-net |
|------------|------------------|-----------------------|------------|--------|--------|---------|
| 700x605 | 1325 | 0.8 sec | 17 min | 0.88 | 0.9 | 0.84 |
| 350x303 | 700 | 0.22 sec | 2.6 min | 0.83 | 0.86 | 0.7 |
| 200x173 | 392 | 0.08 sec | 31 sec | 0.74 | 0.82 | 0.72 |
| 150x130 | 268 | 0.05 sec | 12 sec | 0.53 | 0.62 | 0.49 |

The number of iterations had also been studied comparing to the OD displacement from the image center using STARE data set. The results showed an incrimination in iteration number as the OD displacement increases although there is no obvious relationship to describe it, and this is because of the specific illumination properties of each image that have great effect on image quality. In this case, we used single start point with single endpoint to simplify the analysis process. Table 2. demonstrates this increment for different displacements of the OD.

Table 2. iteration number Vs. OD displacement from image center.

| displacement [Pixel] | 27 | 35 | 41 | 155 | 255 | 267 |
|----------------------|-----|-----|-----|-----|-----|-----|
| Repetition number | 386 | 446 | 502 | 545 | 671 | 693 |

The results showed that this method has a priority comparing to matched filters proposed by Chaudhuri [13] and model based method proposed by Jiang&Mojon [14]. Its performance is also comparable to other high accuracy

methods such as rule-based method proposed by Martinez [15] and vessel analysis using morphological and structural properties of the vessels which hadan accuracy of 91.44% [5] in addition to multiscale line tracing method

proposed in [3] which had an accuracy value of 92.9%.

Speaking of processing time, our method shows a relatively long run time, but it is still close to other researches that declared using MATLAB like the research mentioned in [5] that achieved a processing time of 8 minutes for DRIVE images. While we had a processing time of 6 minutes for DRIVE images.

5. CONCLUSION

In this article, we introduced a new method for automatic retinal blood vessel tree segmentation based on mathematical analysis of the retinal texture in preprocessing stage thenan FMM stage was usedto trace vessels. We applied this method on images form DRIVE and STARE data sets using MATLAB. The proposed method achieved performance close to the other high accuracy algorithms used in this field.

At the end, it is good to refer to the ability of improving this algorithm by searching for more edge-enhancing techniques and taking the advantages of spectral domain to segment arteries and veins and to isolate crossing points of the vessel tree.

REFERENCES

[1] Leandro JGG, Cesar Jr RM, Jelinek H, 2001- “Blood vessels segmentation in retina: preliminary assessment of the mathematical morphology and of the wavelet transform techniques”, In: Proceedings of the 14th Brazilian symposium on computer graphics and image processing. 2001. p. 84–90.
 [2] Chaudhuri S, Chatterjee S, Katz N, Nelson M, Goldbaum M , “Detection of blood vessels in retinal images using two-dimensional matched filters”, IEEE, Trans Med Imaging 1989;8(3):263–9.
 [3]Marios Vlachos M, Dermatas E, “Multi-scale retinal vessel segmentation using line tracking”,

Elsevier, Computerized Medical Imaging and Graphics, 34 (2010) 213–227.

[4] Bandara, Giragama, “A Retinal Image Enhancement Technique for Blood Vessel Segmentation Algorithm”. 2017 IEEE International Conference on Industrial and Information Systems (ICIIS), Peradeniya, Sri Lanka, 2017, pp. 1-5.

[5] Joshi V, “Analysis of retinal vessel networks using quantitative descriptors of vascular morphology”. PHD thesis, University of Iowa, p:164, 2012.

[6] Wang S, Yin Y, Cao G, Wei B, “Hierarchical retinal blood vessel segmentation based on feature and ensemble learning”. Neurocomputing. 149, 708–717 (2015).

[7] Zhang J, Wang L, “Blood Vessel Segmentation of Retinal Images Based on Neural Network”, Springer International Publishing Switzerland, ICIG 2015, Part II, LNCS 9218, pp. 11–17, 2015.

[8] Zhao Y, Rada L, Chen K “Automated Vessel Segmentation Using Infinite Perimeter Active Contour Model with Hybrid Region Information with Application to Retinal Images”. IEEE Transactions on Medical Imaging (2015) 34(9) 1797-1807

[9] Pêtrès C, “Trajectory Planning for Autonomous Underwater Vehicles”. PHD thesis, Heriot-Watt University, Edinburgh, 170p, 2007.

[10] SATHIAN J, “Fast Marching Methods and Level Set Methods for Propagating Interfaces”. University of California, Berkeley, California, 60p, 1998.

[11] Brakke, K.A, “The Motion of a Surface by Its Mean Curvature”, Princeton University Press, Princeton, NH, 1978.

[12] S.K. Godunov. A different scheme for numerical solution of discontinuous solution of hydrodynamic equations. Math. Sbornik, 47:271-306, 1959.

[13] Chaudhuri, S., Chatterjee, S., Katz, N., Nelson, M., Goldbaum, M.: “Detection of blood vessels in retinal images using two-dimensional matched filters”. IEEE Trans. Med. Imaging 8(3), 263–269 (1989).

[14] Jiang, X., Mojon, D, “Adaptive local thresholding by verification-based multithreshold probing with application to vessel detection in retinal images”. IEEE Trans. Pattern Anal. Mach. Intell. 25(1), 131–137 (2003).

[15] Marinez-Perez, M.E., Hughes, A.D, Thom, S.A., Bharath, A.A., Parker, K.H.: “Segmentation of blood vessels from red-free and fluorescein retinal images”. Med. Imaging Analysis 11, 47–61 (2007).

الكشف الآلي للأوعية الدموية لشبكية العين باستخدام منهجية السير السريع والتحليل الرياضي الموضوعي

المهندسة: هبة الله الخضور

heba.kha@gmail.com

طالبة دكتوراه – قسم هندسة الالكترونيات والاتصالات – كلية الهندسة الميكانيكية والكهربائية – جامعة البعث – حمص - سوريا

ملخص:

في هذا العمل اقترحت خوارزمية السير السريع (Fast marching method-FMM) لكشف الأوعية الدموية في شبكية العين. تعتبر تقنية FMM تقنية أمثلة وهي تمتاز بقدرتها على التعامل مع الفروع والتشعبات بسهولة دون أية تكلفة حسابية إضافية حيث تم استخدام هذه الميزة من قبل في مجال الروبوتات لإيجاد المسار الأمثل للروبوت ليتحرك من المنطلق إلى الهدف دون أية تصادمات. وبما أن شجرة الأوعية الدموية لشبكية العين تأخذ شكلا مشابها لتعرجات الطرقات وتفرعاتها فقد وجدنا أن استخدام تقنية FMM سيكون مفيداً لإيجاد المسار الأقصر بين القرص البصري وأطراف الأوعية الدموية بحيث نستطيع رسم شجرة الأوعية الدموية لشبكية العين بسهولة. من الجدير بالذكر أنه تم تطبيق هذه الطريقة باستخدام لغة M في ماتلاب 2016 حيث قمنا في البداية بتطبيق عملية تحليل رياضي موضعي للحصول على تخمين أولي لتوزيع الأوعية الدموية في الصورة بغية تخفيض الضجيج الكبير المضمن في صور الشبكية ولتسهيل تطبيق تقنية FMM لاحقاً. كما تمت مقارنة تقنية السير السريع مع بعض التقنيات الأخرى المستخدمة في كشف شجرة الأوعية الدموية مثل "مرشحات المطابقة-matched filters" حيث أظهرت النتائج أن تقنية FMM تفوقت على عدد من هذه التقنيات كما كانت نتائجها مقارنة لتقنيات أخرى ذات دقة عالية. تم التحقق من أداء تقنية FMM باستخدام قاعدة البيانات "DRIVE" حيث تراوحت دقتها ما بين 80% و 93% (بحسب الضجيج في الصورة) بعدد تكرارات يتراوح ما بين 500 تكرار و 1000 تكرار (بحسب موضع القرص البصري في الصورة) بزمن وسطي يعادل 0.57 ثانية لكل تكرار مما يعني زمن تشغيل يتراوح ما بين 5 إلى 10 دقائق. كما تم استخدام قاعدة بيانات "STARE" أيضاً في عملية التحقق من الأداء حيث حصلنا على دقة تصل إلى 90% من أجل صور STARE التي مقاسها 700x605 خلال 15 دقيقة ودقة تصل إلى 86% بزمن 2.6 دقيقة عند إنقاص الدقة إلى 350x303.

الكلمات المفتاحية:

تقنية السير السريع – كشف الأوعية الدموية لشبكية العين – الكشف الآلي.